

**Single Purchase Counterweight Fly System
Operated from stage right at deck level**
LINE SET CAPACITY: 590 kg 1,300 lbs

BATTEN (PIPE) LENGTH: 18.3 m 60 feet

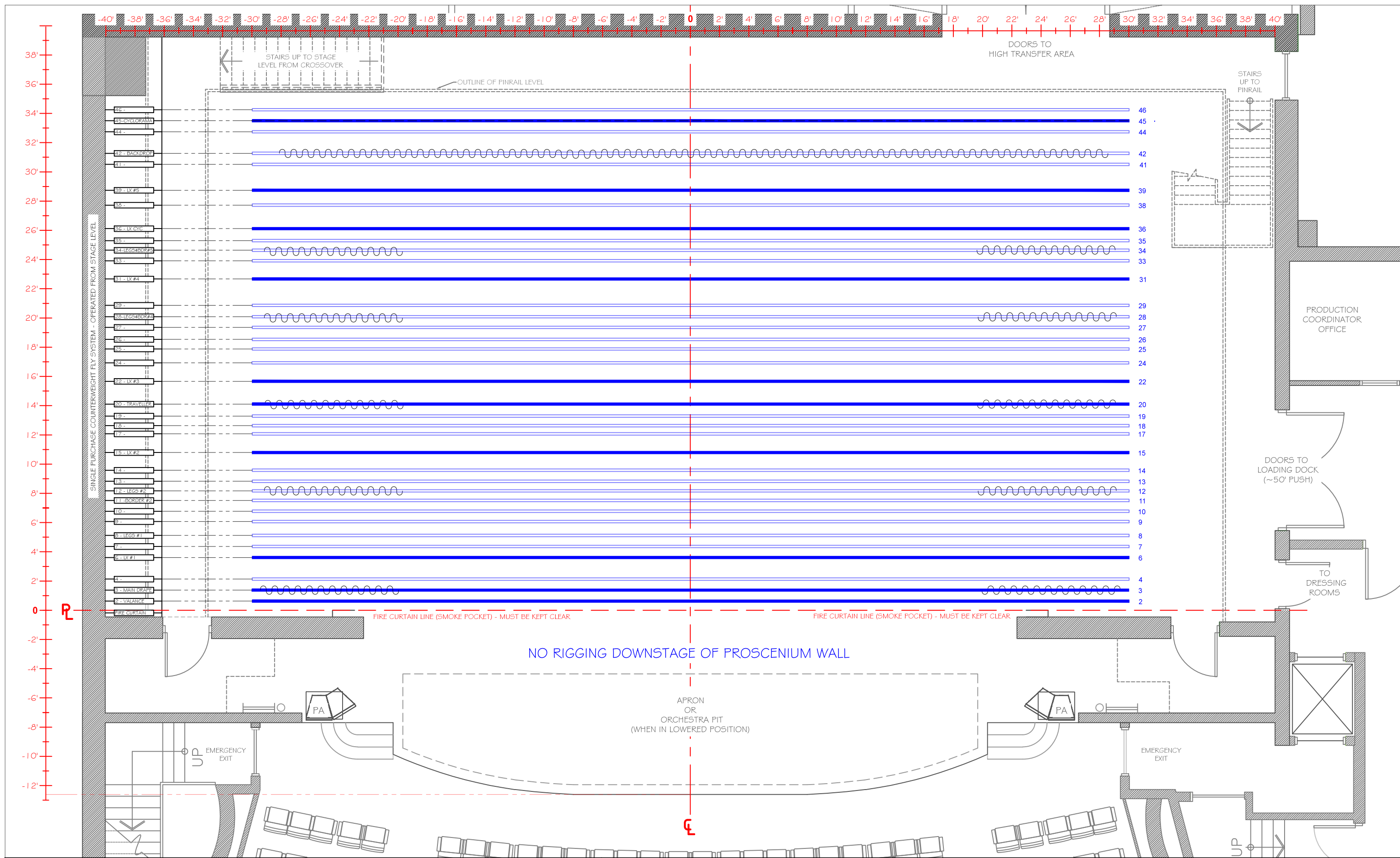
LINE	DISTANCE From Setting Line (Upstage of Smoke Pocket) METERS	DISTANCE From Setting Line (Upstage of Smoke Pocket) IMPERIAL	HOUSE HANG	NOTES	HOUSE TRIM
01*	- 0.08	- 0' - 3"	Fire Curtain - travel must always be kept clear	Permanent	
02*	0.19	0'-7.5"	Valance (Bermuda Blue)	Permanent	18'-9"
03*	0.42	1'-4.5"	Main Drape (Bermuda Blue)	Permanent	
04	0.65	2'-1.5"	EMPTY		
06*	1.10	3'-7.5"	1 st Electrics (LX1)	30 circuit raceway	23'-5"
07	1.33	4'-4.5"	EMPTY – LIMITED USE	Very close to LX1	
08	1.56	5'-1.5"	Black Legs 1	39' opening	
09	1.85	6'-1"	EMPTY		
10	2.07	6'-9.5"	EMPTY		
11	2.29	7'-6"	Black Border 2		18'-9"
12	2.49	8'-2"	Black Legs 2	39' opening	
13	2.69	8'-10"	EMPTY		
14	2.92	9'-7"	EMPTY		
15*	3.29	10'-9.5"	2 nd Electrics (LX2)	30 circuit raceway	23'-0"
17	3.68	12'-1"	EMPTY		
18	3.85	12'-7.5"	EMPTY		
19	4.05	13'-3.5"	EMPTY		
20*	4.30	14'-1.5"	Black Traveller (Legs & Border 3)	As Legs = 39' Opening	19'-6"
22*	4.78	15'-8"	3 rd Electrics (LX3)	20 circuit raceway	23'-3"
24	5.16	16'-11"	EMPTY		
25	5.45	17'-10.5"	EMPTY		
26	5.65	18'-6.5"	EMPTY		
27	5.90	19'-4.5"	EMPTY		
28	6.13	20'-1.5"	Legs & Border 4	39' opening	18'-3"
29	6.36	20'-10.5"	EMPTY		
31*	6.91	22'-8"	4 th Electrics (LX4)	20 circuit raceway	23'-4"
33	7.29	23'-11"	EMPTY		
34	7.51	24'-7.5"	Legs & Border 5	39' opening	18'-1"
35	7.71	25'-3.5"	EMPTY		
36	7.96	26'-1.5"	Cyclorama Lighting		
38	8.45	27'-8.5"	EMPTY		
39*	8.76	28'-9"	5 th Electrics (LX5)	20 circuit raceway	23'-9"
41	9.30	30'-6"	EMPTY		
42	9.53	31'-3"	Black Drop		21'-1"
44	9.98	32'-9"	EMPTY		
45*	10.21	33'-6"	Cyclorama (PVC)		
46	10.44	34'-3"	EMPTY		
---*	10.74	35'-3"	Storage Pipe Only		

NOTES: All distances shows are from the setting line (Upstage side of the smoke pocket)

Any line set indicated with * have permanent use.

Legs and border pipes can be changed. Above lists the stock house positions.

If any masking is moved, it must be restored at the production's expense, back to stock configuration.



MAINSTAGE - FLY SYSTEM PIPE LOCATIONS

Shaded Pipes have permanent use - see line set schedule for details

DRAWN BY: ML
 DATE: JAN-2015
 SCALE: AS INDICATED

CENTREPOINTE THEATRES
 Ben Franklin Place - 101 Centrepointe Drive
 Ottawa, ON K2G 5K7 613-580-2703

